

Prosthetic Kit



A flexible kit to easily handle common restorative procedures.

Hex Driver



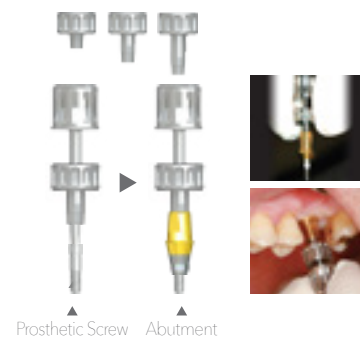
1.2, 1.25 Hex Driver

Angled Driver



Abutment Positioner

One-hand control of abutment and screw adjustments



Surgical Accessory Kit



An accessory kit composed of various tools to assist you throughout implant surgeries.



Tissue Punch



Carve out soft tissues to enable implantation without opening the flap. (1,000 rpm)



Dia. Marker



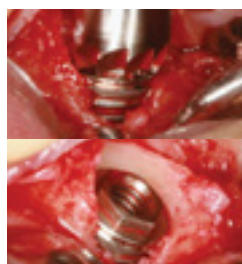
Mark the positioning of the implant, and check the diameter and spacing of the implants. (1,200rpm)



Bone Planer



Smooth out uneven surfaces of the bone for implantation. (1,200rpm)



Bone Profile



After removing the cover screw or healing abutment, quickly trim the surrounding bone to prepare the connection of the prosthesis. (50rpm)



QuickTight



Quickly and easily tighten the cover screws, healing abutments, abutment screws, and other prosthetic components. (500~1,000rpm / 1~2Ncm)